



# 黃世任 副教授

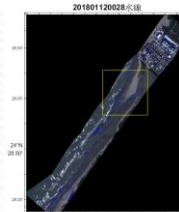
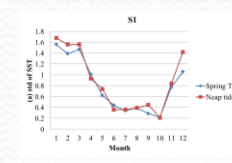
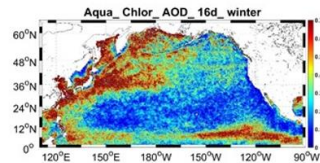
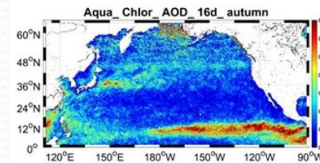
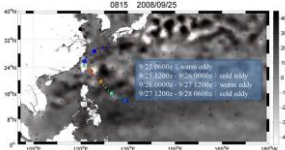
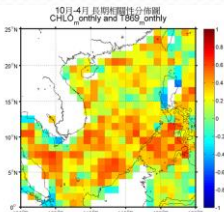
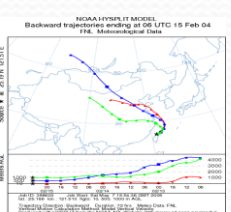
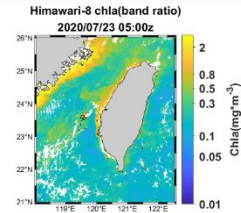
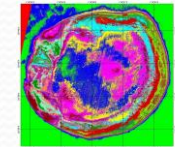
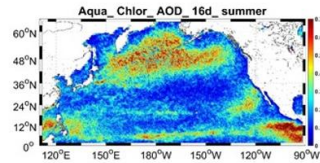
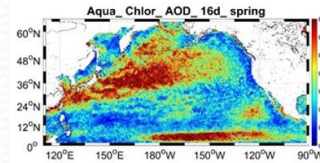
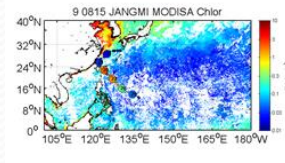
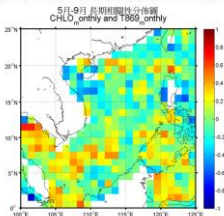
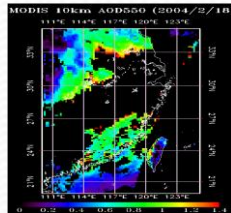
## 大氣輻射研究室



學歷：國立中央大學 太空科學研究所 理學博士  
 經歷：國立臺灣海洋大學 海洋環境資訊系 副教授  
 國立臺灣海洋大學 海洋環境資訊系 助理教授  
 國立臺灣海洋大學 海洋環境資訊系 助教

研究領域：大氣輻射、遙測資料處理及應用、海洋物理

研究內容：主要以衛星遙測資料探討淺海海域的海床主要物質類別與水深分布，分析東亞地區的空氣中懸浮氣膠量的分布和可能來源，颱風強度與海洋表層熱含量的關係，颱風經過對海表葉綠素濃度與海表溫的影響，海表面溫度分布特徵受潮汐的影響，海上氣膠對海洋表面葉綠素濃度的影響，亞洲沙塵暴對北太平洋海洋葉綠素濃度分布的影響，建立地球同步氣象衛星資料推算葉綠素濃度分布，以機載高光譜資料及Landsat 8資料推算臺灣西部沿岸水線位置。



# Shih-Jen Huang, Associate Professor

## Library of atmospheric radiation



Education : Institute of Space Science, National Central University (Ph.D.)

Professional experience :

- Associate Professor, Department of Marine Environmental Informatics, NTOU
- Assistant Professor, Department of Marine Environmental Informatics, NTOU
- Assistant Teacher, Department of Marine Environmental Informatics, NTOU

Expertise: Remote sensing, Oceanic information system, Atmospheric radiation



### Research interest:

The major research of our lab is to classify the seabed type and to retrieve the bathymetry of shallow water by satellite imagery. To explore the aerosol distribution and source in East Asia. To analyze the relationship between typhoon intensity and ocean surface content. To explore the impact of typhoon on sea surface chlorophyll concentration and sea surface temperature. To analyze the tide effect on the characteristics of sea surface temperature distribution. Exploring the influence of marine aerosol on the concentration of chlorophyll. To explore the impact of Asian sandstorms on the distribution of chlorophyll concentration in the North Pacific. To establish the algorithm of chlorophyll concentration of the Himawari-8 imagery. To estimate the location of the waterline along the western coast of Taiwan by use airborne hyperspectral imagery and Landsat 8 imagery.

