

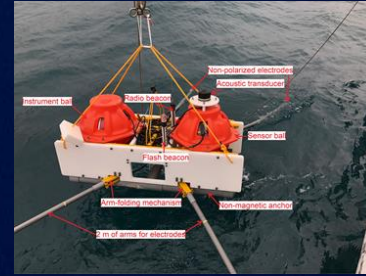
姜智文 助理教授 地物探勘實驗室



學 歷：國立中央大學地球物理研究所 理學博士

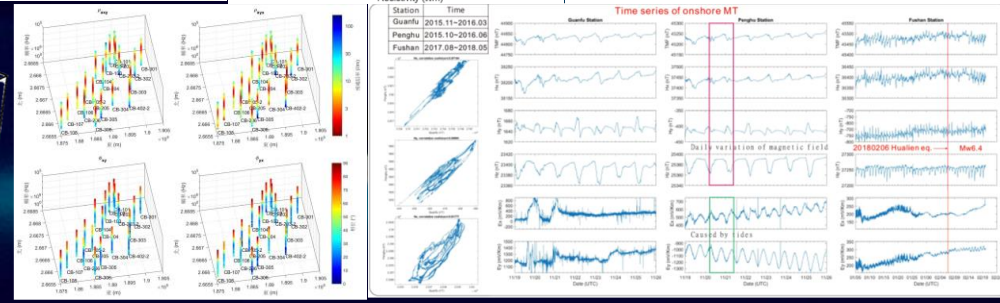
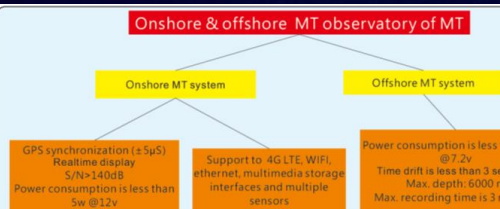
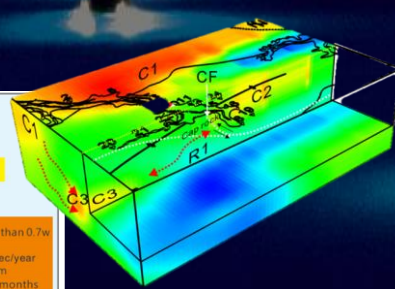
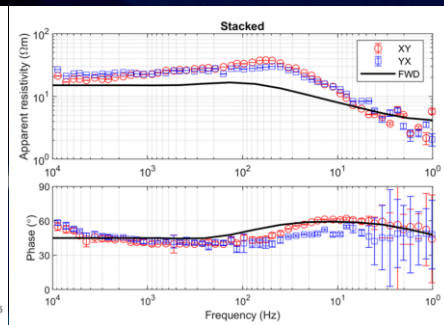
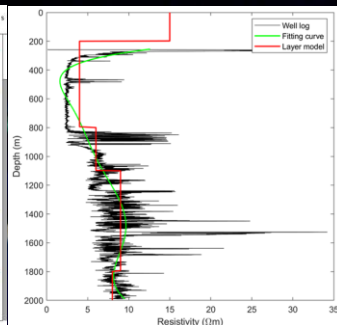
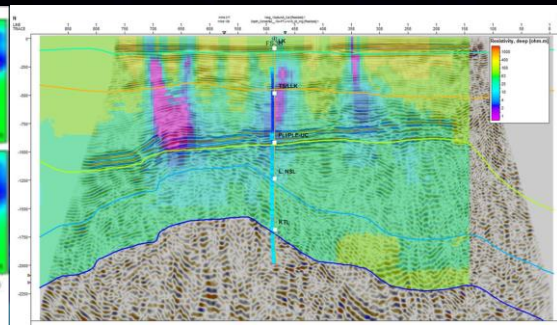
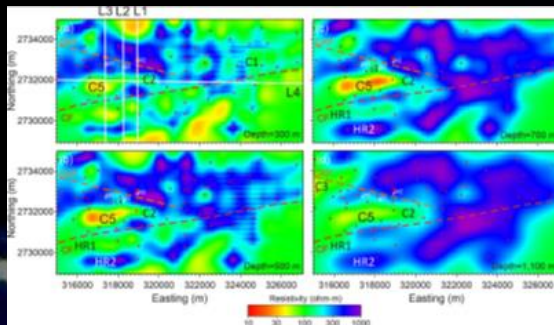
經 歷：國立中央大學地球科學系 博士後研究
國立台灣大學地質科學系 博士後研究
京都大學土木與地球資源學系 訪問

研究領域：大地電磁學、地球物理探勘學、水下電磁波測勘、環境與地球科學



研究內容：

- 主要利用電磁波探勘法，針對台灣地區之海、陸電性構造特性，以及地熱構造進行研究。
- 近年來，成功自主開發海、陸電磁探勘設備，長期收集臺灣地區電磁波訊號，同時輔以地質、地震活動等資訊，試圖析臺灣之電性構造隨時空變化分布情形，以及電磁波變動特性，做為研究臺灣海陸電性構造之基礎資料。



Chih-Wen Chiang, Assistant Professor

Exploration Geophysics Laboratory



Education :

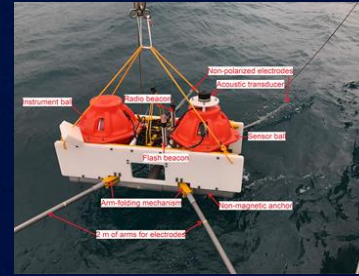
- Institute of Geophysics, National Central University (Ph.D.)

Professional experience :

- Postdoc, Department of Earth Sciences, NCU
- Postdoc, Department of Geosciences, NTU
- Visitor, Department of Civil and Earth Resource, KU

Expertise :

Magnetotellurics, Geophysical explorations, Marine electromagnetic explorations, Earth & environmental Sciences



Research interest :

- Mainly use the electromagnetic wave exploration method to study the characteristics of the sea and land electrical structure in the Taiwan area, as well as the geothermal structures.
- In recent years, it has successfully independently developed sea and land electromagnetic exploration equipment, long-term collection of electromagnetic wave signals in Taiwan, supplemented by geological, seismic activity and other information, trying to analyze the temporal and spatial changes of Taiwan's electrical structure, as well as the characteristics of electromagnetic waves. Basic data for studying the electrical structure of Taiwan's land and sea.

